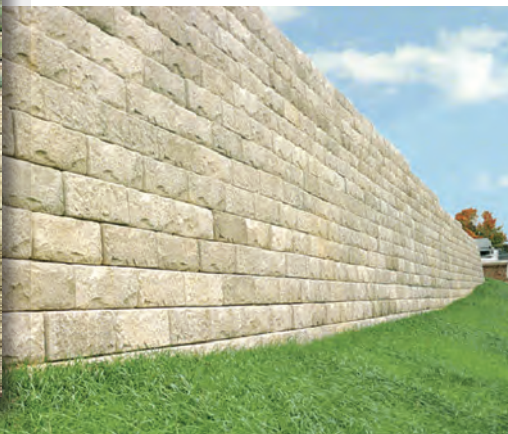


# KASTLE-wall™



# KASTLE-wall™

## Benefits

**Product Availability:** No more searching for natural stone. These blocks are made from poured concrete with a natural stone face.

**Faster Installation:** Walls install faster, maximizing productivity of your equipment and reducing the manual labor associated with each project.

**Taller Gravity Walls:** The massive size and weight of the block creates the ability to build taller unreinforced retaining walls than can be done with smaller retaining wall blocks.

## Features

KASTLE-wall is a large retaining wall system with the following key features:

**Size:** Place just one block and you have installed 5.33 sq. ft. of retaining wall.

**Engineering:** Due to their massive size, walls can be engineered up to 16' high under ideal conditions without the use of geogrid reinforcement.

**Durability:** The block is made from wet-cast concrete with a minimum of 3,000 PSI compressive strength.

**Aesthetics:** The block has a natural stone face look. A completed wall can be stained to provide incomparable authenticity and appeal.

**Modular Dimensions:** With a standard face size of 48" x 16", the blocks are easy to install and can be easily substituted for other retaining wall products.

## Summary Specifications

**Block Face:** Each full block has 5.33 square feet of wall face.

**Concrete:** Minimum of 3,000 PSI compressive strength.

**Lifting Device:** Lifting insert anchor designed for easy attachment.

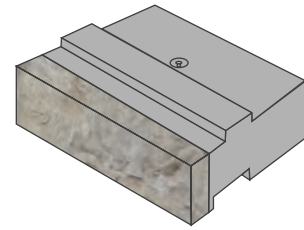
**Minimum Inside Turning Radius:** 13.1 feet at top course with 3.6° setback.

Retaining wall setback of 3.6° is automatically built into the wall via the design of the tongue and groove locking mechanism. Spacer bars available to change to 7.2° setback. A 7.2° setback is achievable with 1" fiberglass spacer bars.

**Distributed by:**

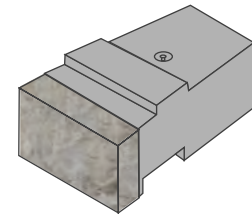
### \*Full Block

16" H x 48" W x 24" D Min.



### Half Block

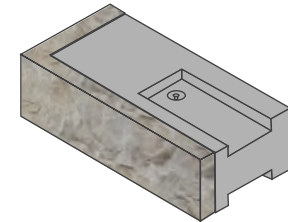
16" H x 24" W x 24" D Min.



### Corner Block

16" H x 48" W x 24" D

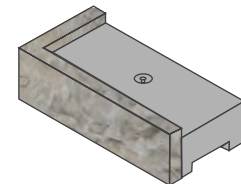
Used Right or Left (Left shown)



### Corner Top Block

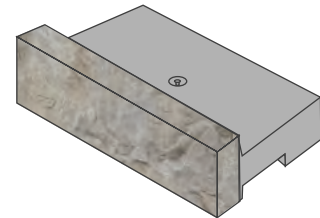
16" H x 48" W x 24" D

Right and Left (Left shown)



### Full Top Block

16" H x 48" W x 24" D



### 39" Fitting Block

Both sides notched 10.5" wide

